

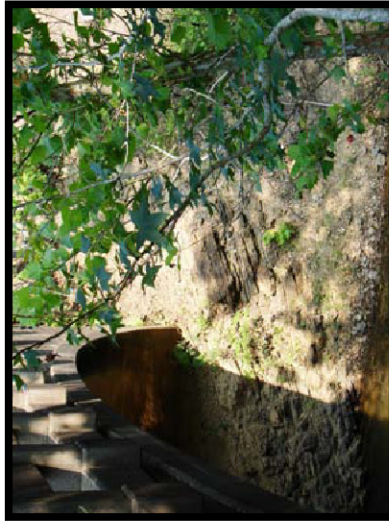
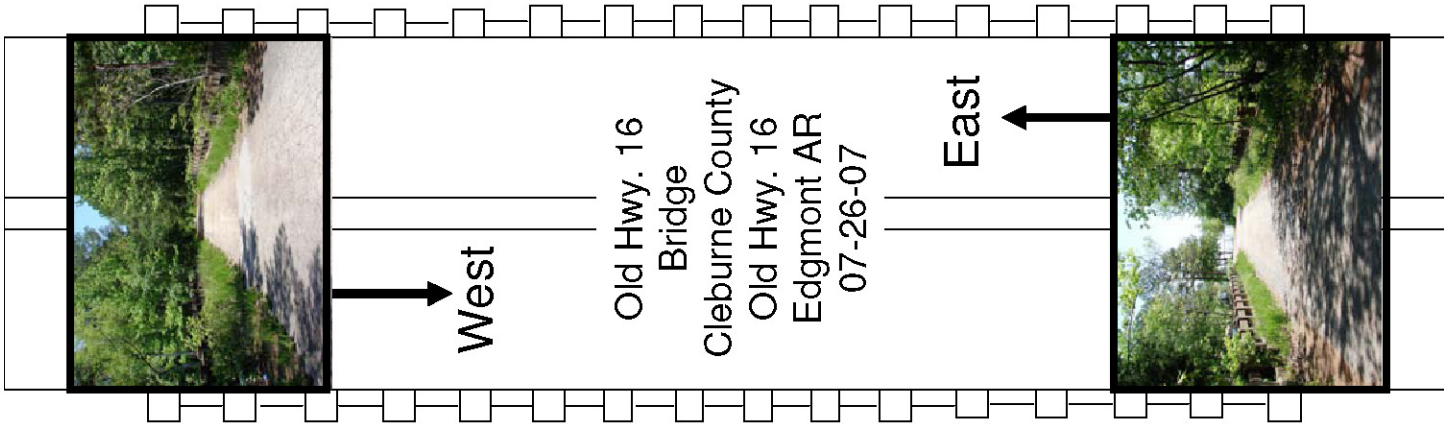
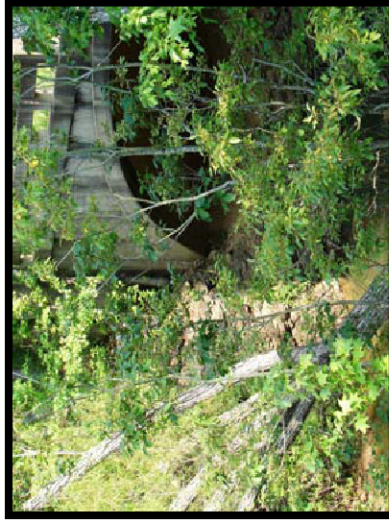
- \* In-Service Concrete Arch - Deck (0)
- Evaluation Concrete Arch - Deck (1)
- ⊕ Preserved Concrete Arch - Deck (0)
- ⊘ Demolished Concrete Arch - Deck (0)

## Evaluation WPA Concrete Arch - Deck Bridges



**EVALUATION BRIDGE - OLD HIGHWAY 16  
BRIDGE  
CLEBURNE COUNTY  
CONCRETE ARCH – DECK  
DATE OF CONSTRUCTION – 1938  
BUILDER - WORKS PROGRESS ADMINISTRATION**





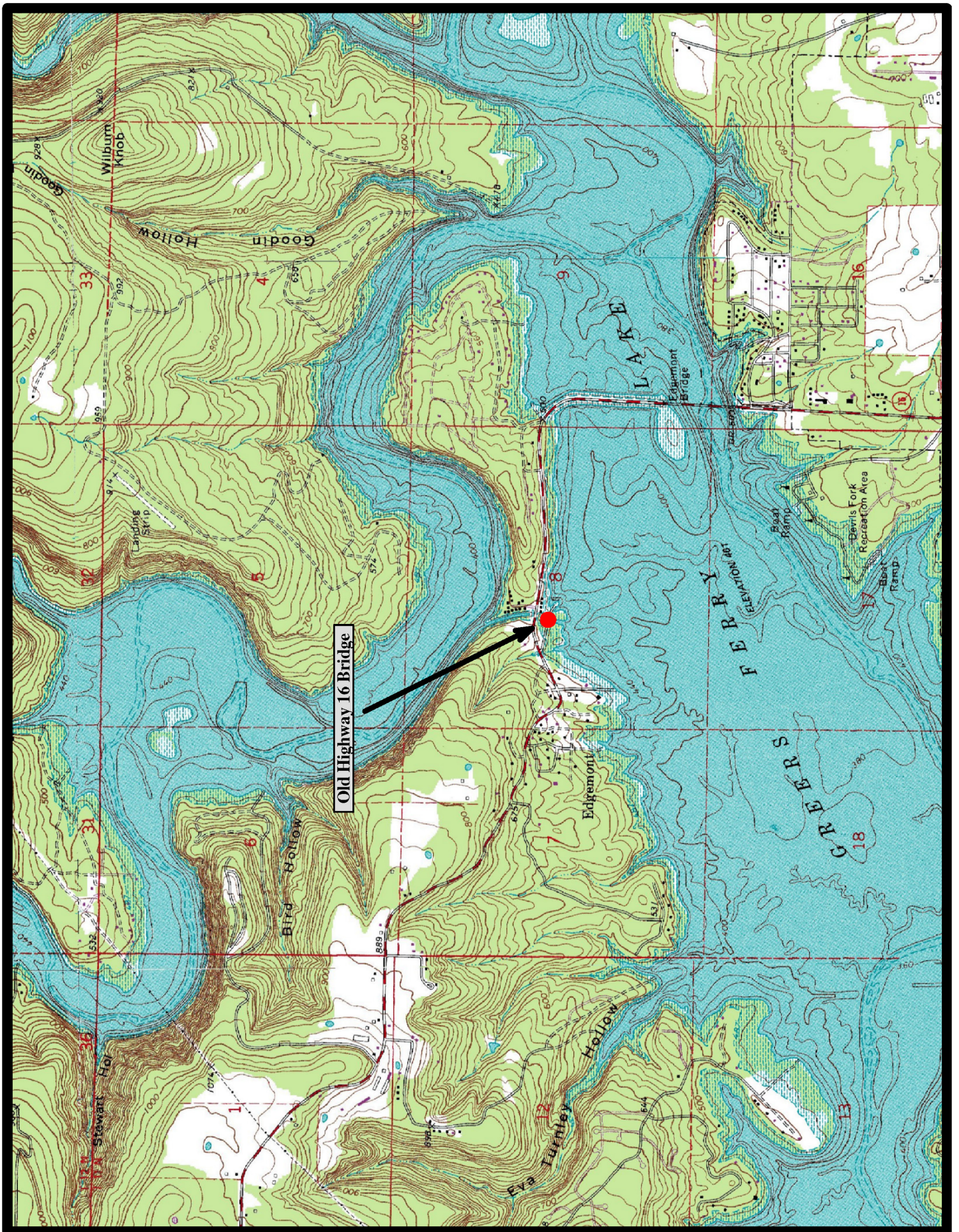
**WPA Bridges Properties** ✖

General | Attributes

Name	Value
▶ Bridge_Number	Old Hwy. 16 Bridge
Type	111
HAER_Number	nil
county_name	Cleburne
District	5
Route	Old Hwy. 16 (Lakefront Resort Road)
Section	nil
Date_Built	1938
SHPO_Number	nil
Log_Mile	nil
Name	Old Highway 16 Bridge
Description	Concrete Deck Arch, Closed Spandrel
Topographic_Map	Greers Ferry
Programmed	No
HB_Inventory_Date	nil
Water_Crossing	Greers Ferry Lake
Demolished	No
In_Service	Yes
Pool_Reserve	No
Evaluation	True
Unique_Attributes	Only WPA Concrete Deck Arch
Spans	1
Main_Span_Length	nil
Main_Span_Width	nil
Vertical	nil
Total_Length	nil
Photographed	False
Field_Condition	good
Rehabed	No
Nom_by_SHPO	No
<b>ID1</b>	408
Builder	Works Progress Administration (WPA)
Owner	Corps of Engineers
Skewed	No
Degrees_of_Skew	nil

OK Cancel





Old Highway 16 Bridge



# Notes